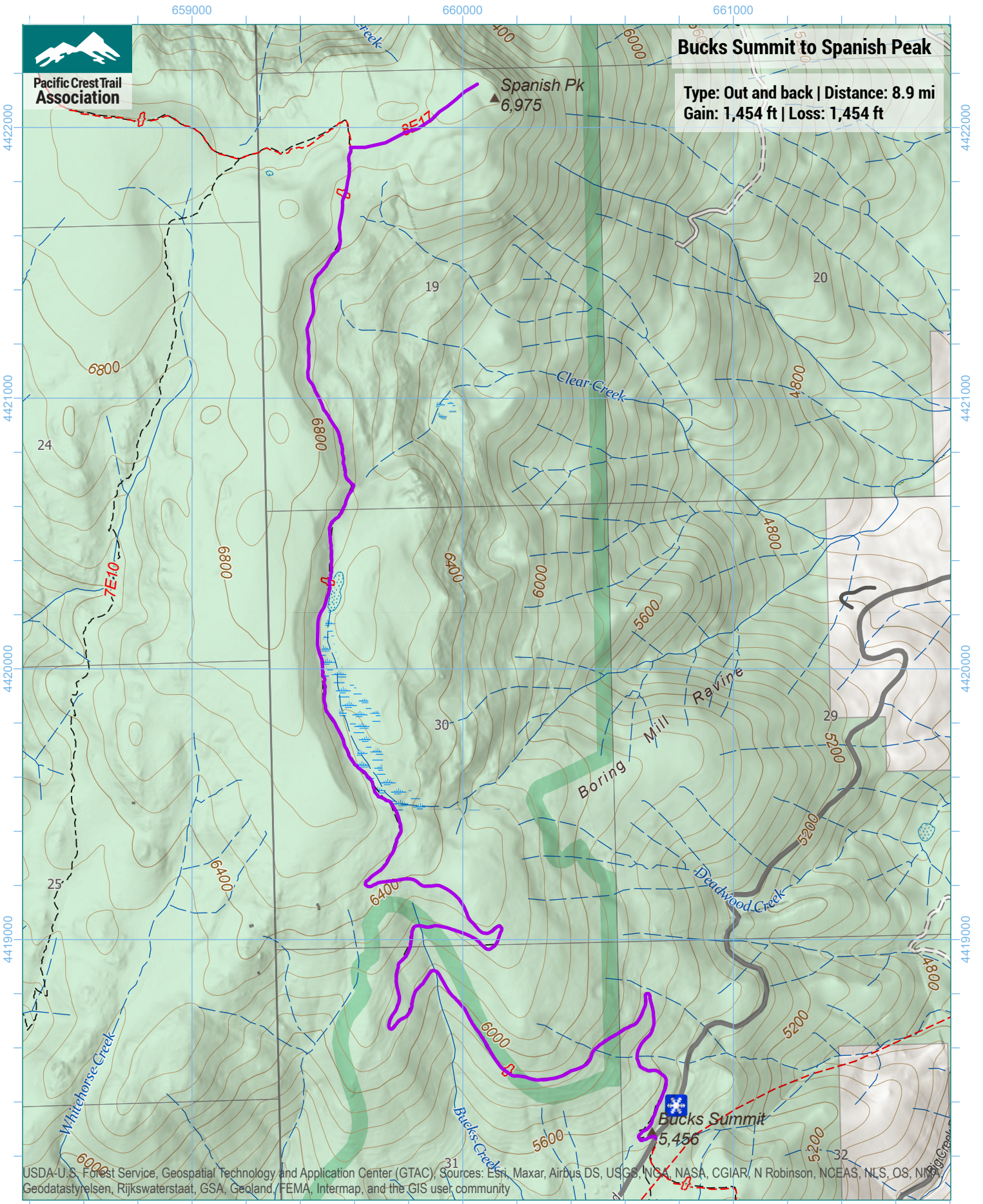




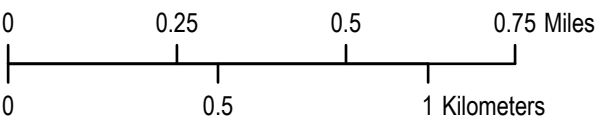
Pacific Crest Trail Association

Bucks Summit to Spanish Peak

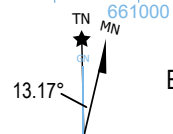
Type: Out and back | Distance: 8.9 mi
Gain: 1,454 ft | Loss: 1,454 ft



USDA-U.S. Forest Service, Geospatial Technology and Application Center (GTAC), Sources: ESRI, Maxar, Airbus DS, USGS, NOAA, NASA, CGIAR, N Robinson, NCEAS, NLS, OS, NINA, Geodatastyrelsen, Rijkswaterstaat, GSA, Geoland, FEMA, Intermap, and the GIS user community



1 inch equals 1,500 feet
1:18,000
WGS 1984 UTM Zone 10N



Trip data by PCTA
Basemap by US Forest Service
Contour interval: 40ft